

sustainable Peterborough



FCM CEDI Project

May 29, 2018



FCM CEDI

Community Economic Development Initiative

- Is the process of bringing together two or more neighbouring First Nations and municipalities to develop and implement a shared vision for the future of their communities and their regional economy.
- Joint CED can be more complex as it brings together different communities and economies with their own unique priorities, jurisdictions, histories, and cultures.





FEDERATION
OF CANADIAN
MUNICIPALITIES

FÉDÉRATION
CANADIENNE DES
MUNICIPALITÉS

- **Cando (Council for the Advancement of Native Development Officers)**
- National, non-profit Indigenous organization supporting Economic Development in Aboriginal communities
- Membership-based, +/- 500 members across Canada. Members are practicing EDOs, elected officials, provincial/federal government staff and private sector
- Services focusing on capacity-building for economic development officers (EDOs) working in Indigenous communities
- Based in Edmonton, Alberta
- **Federation of Canadian Municipalities (FCM)**
- Mandate: Bring together Canadian municipalities to speak with one voice that influences federal policies and programs
- Voice of municipal government in Canada since 1901
- Advocacy through “listening, uniting and influencing”
- Membership-based, +/- 2,000 members = (>90% of Canadian population)
- National and international programs for municipal development

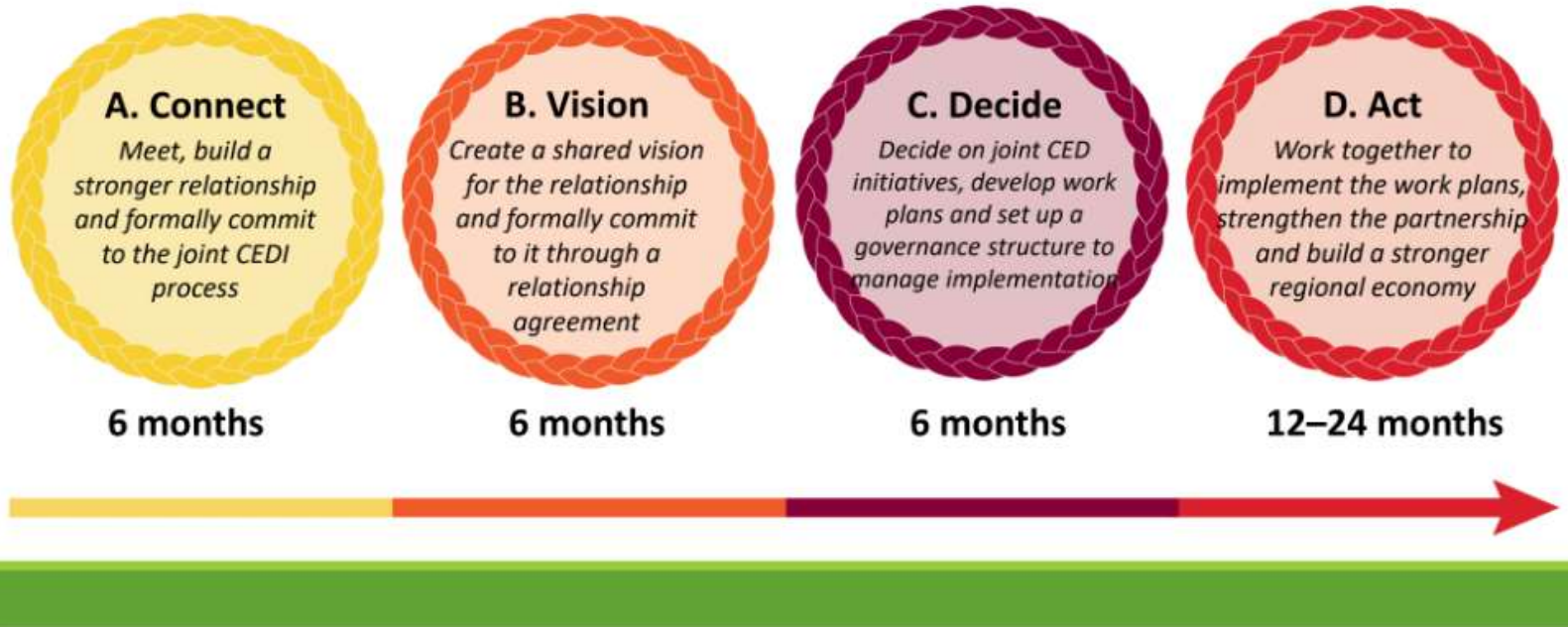


CEDI Program Goals

1. Establish sustainable and resilient relationships between elected officials, land management staff, economic development staff, and broader community members.
2. Increase the capacity of participating communities to engage in and develop joint community economic development initiatives and long term land use plans.



CEDI Stronger Together Approach





CEDI Partnership

Original Partnership:

- FCM & Cando
- Curve Lake First Nation
- Hiawatha First Nation
- Selwyn Township
- PKED
- SP

Recent additions:

- County of Peterborough
- Otonabee-South Monaghan





Joint CEDI Workshop #1

Hiawatha First Nation, Curve Lake First Nation,
Township of Selwyn, Peterborough & Kawarthas
Economic Development

*VALIDATION AND NEEDS ASSESSMENT
WORKSHOP*

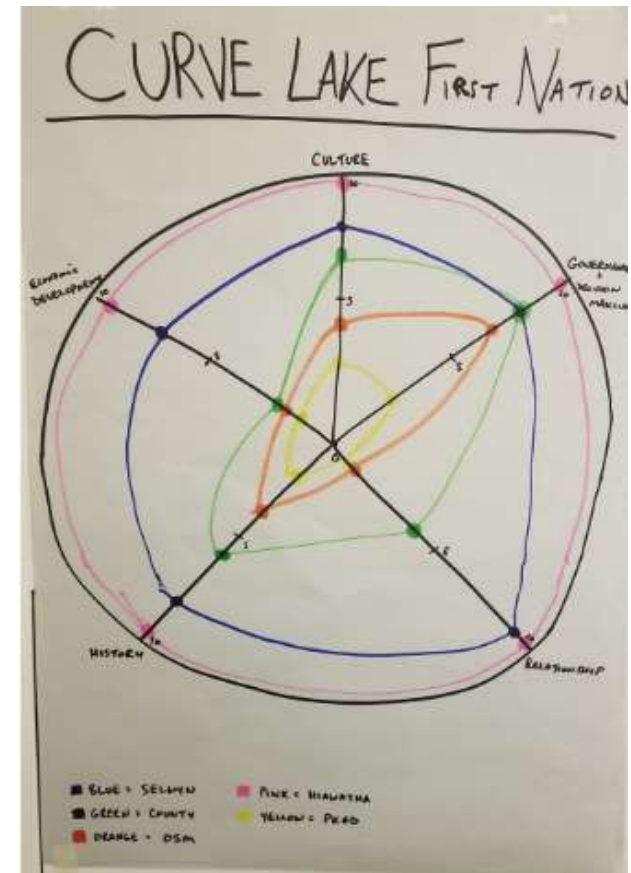
FEBRUARY 15-16, 2018

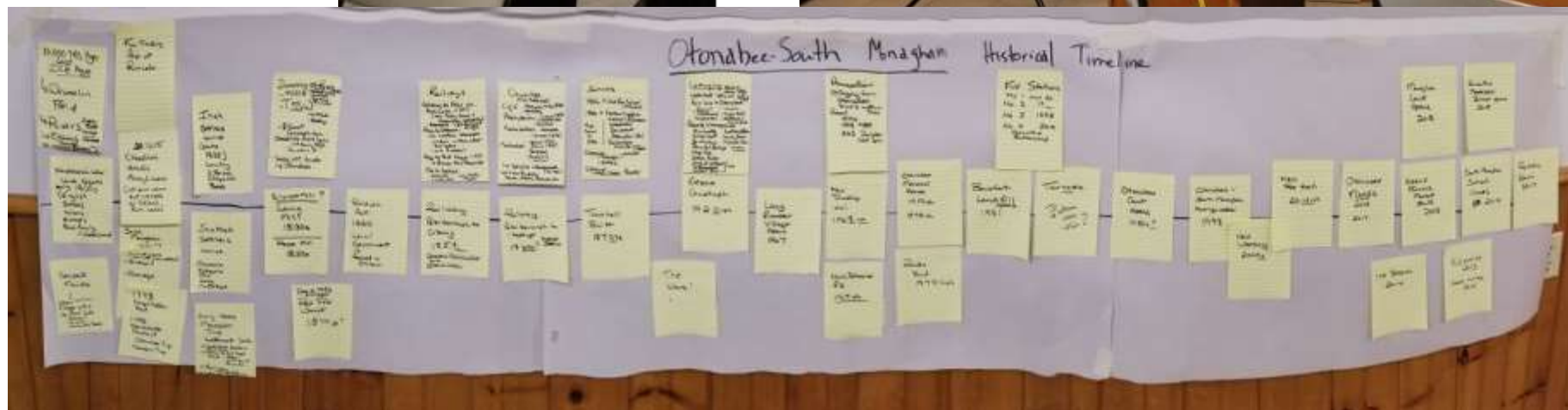




Workshop #1

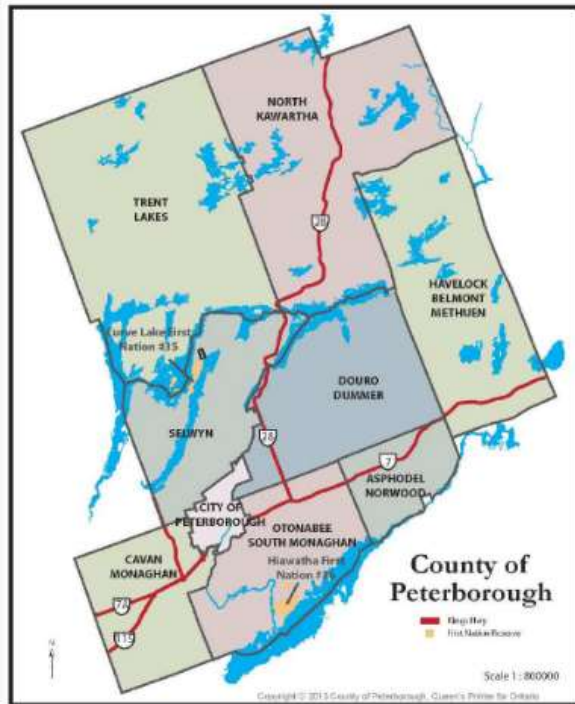
- Relationship Self Assessment – how well do you know your partner?
- Historic timelines
- ‘Who we are and how we work’ presentations
- Understanding of Governance
- Current levels of Partnerships







SUSTAINABLE PETERBOROUGH



CLIMATE CHANGE ACTION PLAN



Workshop #2

May 10 – 11, 2016

- Share Economic Strategies/Priorities
- Explore potential Areas of Collaboration
- Develop a Shared Vision & Vision Statement for Partnership
- Continue relationship building and learning

Short Term Opportunities

- Land Acknowledgement
- Treaty 20 Area Planning Group
- Economic Development Collaboration Committee
- Harvesting Events, Regional fall event



Longer Term Opportunities

- Annual Education Events/Meetings/Sessions
- Serpent Mounds Park Redevelopment
- Creation of a planning/consultation process between municipalities & First Nations



Next Steps

- Next workshop proposed for November 2018
- Continue to have monthly Steering Committee meeting
- Work towards coming up with a community mapping project