



## CLIMATE CHANGE ACTION PLAN



@sustainableptbo



#OURchange



Sustainable Peterborough



sustainablepeterborough.ca

**SP Coordinating Committee Update**  
March 30, 2016



# Agenda

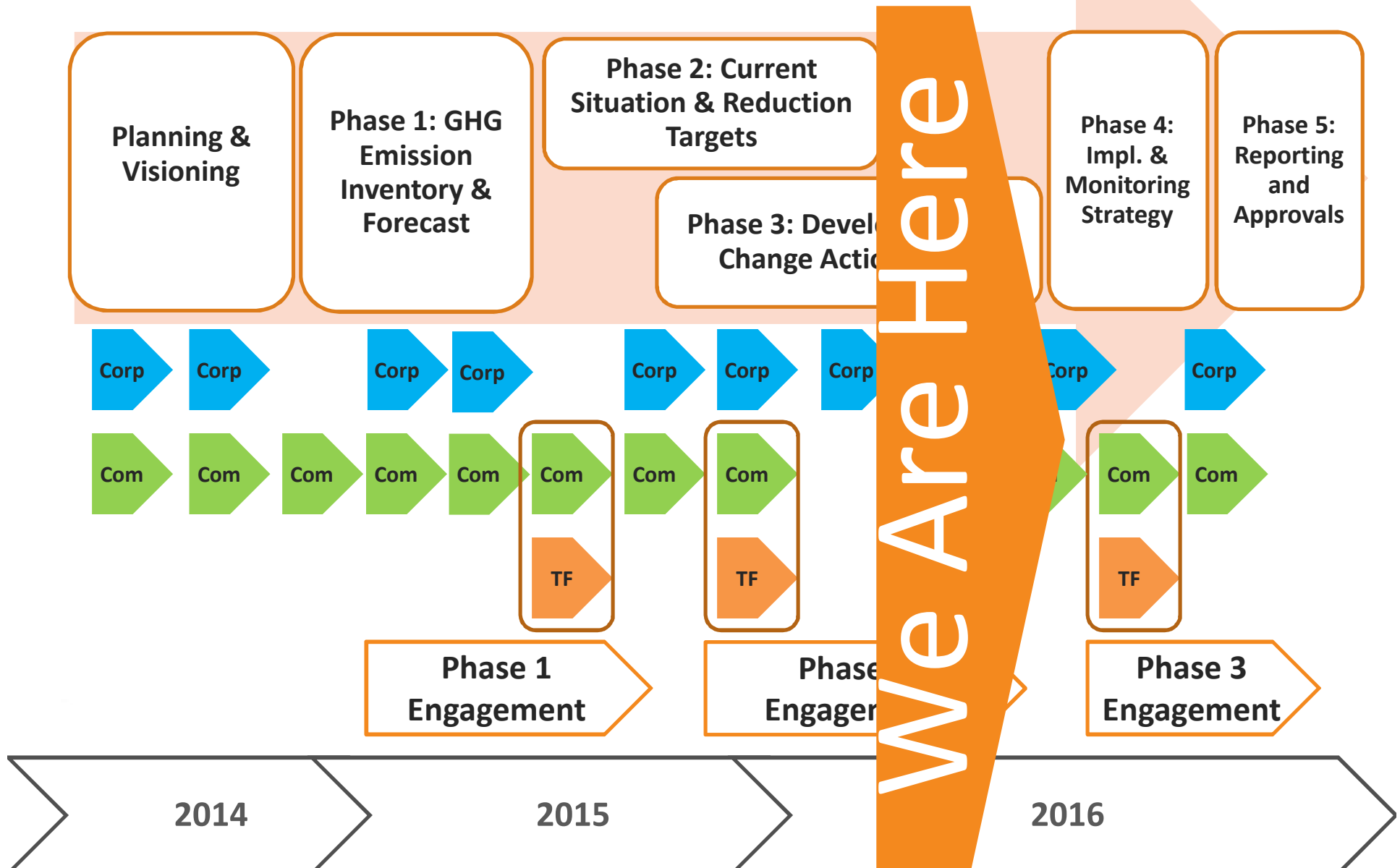
- Project Updates
- Proposed Plan Structure
- Task Forces
- Next Steps
- Questions/Discussion



# Project Updates



# Planning Process



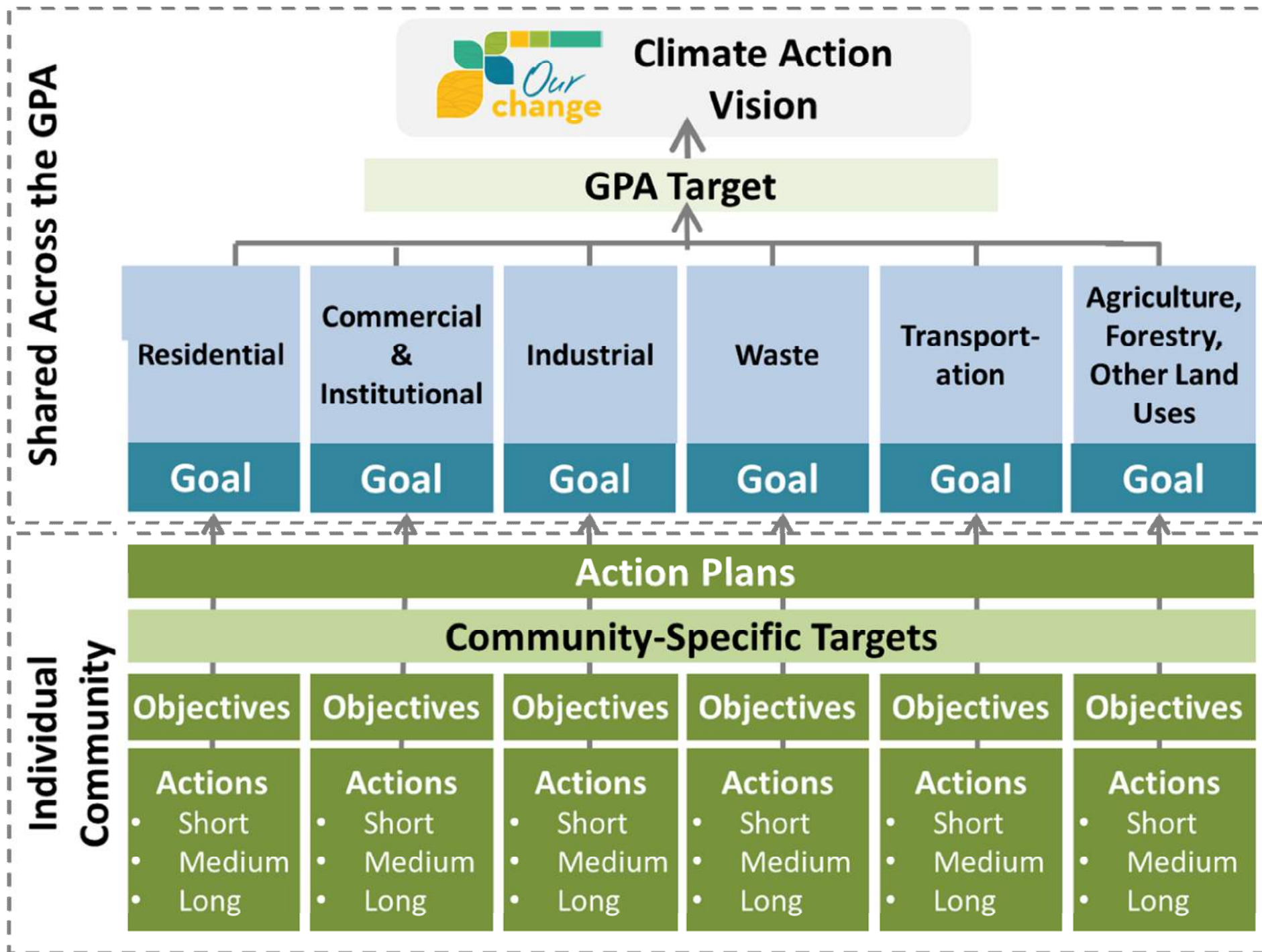


## Updates

- “ Community Task Forces and Action Plans
  - “ Third meeting held Mar 23 – review and assess community actions
  - “ Final meeting in May – review draft action plans and confirm community targets; implementation considerations
- “ Corporate Stakeholders and Actions Plans
  - “ March Action Planning Sessions (today and tomorrow)
  - “ Next meeting in May – review draft corporate action plans; confirm corporate targets; input/feedback on draft community action plans
  - “ Final meeting in July – implementation considerations; strategies for Council adoption



# Proposed Plan Structure





## Plan Components

**VISION** → Our aspiration statement that defines where we are going.

**GPA TARGET** → Defines an aspirational emissions reduction that we are aiming to achieve across the entire Greater Peterborough Area in the long-term (e.g. 2050). Typically expressed as a percentage reduction below the quantity of emissions released in the baseline year.

**THEMES & GOALS** → Aspirational statements that provide the context and direction for broad themes that are based on PCP sectors.







## Plan Components

### **COMMUNITY-SPECIFIC TARGET** →

Defines a quantitative emissions reduction that we are aiming to achieve for each community in the medium-term (percentage reduction below baseline year).

**OBJECTIVES** → Broad statements that establish direction for our efforts. These are descriptive and outcome-based.

**ACTIONS** → Recommended activities, initiatives that are directly aligned to the achievement of our objectives. Actions are Short-Term (1-3 years), Medium-Term (4-9 years), and Long-Term (10+ years).





# Proposed Plan Sectors

## At Home

- Community Energy
- Community Waste
- Land Use Planning
- People & Health

## At Work

- Community Energy
- Community Waste
- Land Use Planning
- Economy & Business
- People & Health

## On the Move

- Transportation
- Land Use Planning
- Economy & Business
- People & Health

## What We Eat

- Agriculture & Food
- Economy & Business
- People & Health

## Our Land Uses

- Agriculture & Food
- Natural Assets & Water
- Land Use Planning
- People & Health



# Plan Layout

## GPA Direction on Climate Action

- “ Vision for Climate Action
- “ GPA GHG Reduction Target

## Chapter Per Community

- “ Where Are We Now? (GHG Baseline Inventory)
- “ Where Do We Want to Go? (Community-Specific Target)
- “ How Are We Going to Get There?
  - “ Community Actions
  - “ Corporate Actions

## Implementation

- “ Governance
- “ Communication and Reporting
- “ Funding/Resources
- “ Monitoring and Measurement



# Community-Specific Implementation Schedule

## CORPORATE

Action	Timeframe	Responsibility	Estimated Cost	Potential GHG Reductions	Estimated Annual Costs Savings

## COMMUNITY

Action	Timeframe	Partners		Impact		Potential GHG Reductions	Co-Benefits	Estimated Cost
		Lead	Collaborators	Mit.	Adapt.			





# Next Steps

# Timeline





## Next Steps

- “ Community Action Plans
  - “ Community-specific input on actions
  - “ Quantify actions
  - “ Task Force meeting: review and obtain feedback on targets
- “ Corporate Action Plans
  - “ Action planning sessions
  - “ Quantify actions and draft action plans
- “ Steering Committee
  - “ Review of action plans in May
  - “ Implementation structure and complete draft GPA plan





**SUSTAINABLE** PETERBOROUGH

# Thank You!



**CLIMATE CHANGE ACTION PLAN**