

List of SP Working Groups

Sustainable Peterborough has working groups in the following theme areas: Agriculture and Local Food, Climate Change, Energy, Kawartha Naturally Connected, and Economic Development. If you are interested in joining a Working Group or finding out what they are doing, please visit our website at www.sustainablepeterborough.ca

2013 Opportunities

- Waste Management Master Plans for both the City and the County of Peterborough.
- Landfill Gas Generation Facility at the Peterborough Waste Management Facility.
- Municipalities are planning to retrofit their street lights to high efficiency LED lighting.
- Installation of Electric car charger at Best Western Otonabee Inn.
- Hiawatha First Nation is planning on building a new LEED certified Fire Hall/Police Station/EMS Base.
- Revitalizing Township of Asphodel-Norwood farmer's market.
- Norwood Landfill to convert into a Transfer Station.
- Cultural mapping project commencing at Township of Selwyn.
- Master Trails Plan prepared by Township of Selwyn
- A household hazardous and special waste depot to be developed at the Smith Landfill Site.
- Township of Selwyn and ORCA scheduled to plant 1,000 trees in 2013.
- Rooftop solar systems on the Ennismore Community Centre and the Lakefield Public Works Depot.
- Investigating the feasibility of a biogas facility at the Smith Landfill Site.
- Transition Town is facilitating a Task Force for the Economic Impact Analysis of the Local Food Sector for the Peterborough Area.
- Nourish Peterborough continues its partnership exploration of rural municipal food security needs, and will further its plans for a food centre in the City of Peterborough.
- The Climate Change Working Group is working to prepare a Climate Change Environmental Scan for the Greater Peterborough Area.
- Rooftop solar panels on the Public Works Garage and on the Community Center in Township of Asphodel-Norwood.
- City of Peterborough plans to install a 437 kW rooftop solar project on the Kinsmen Arena.
- City of Peterborough and Peterborough Utilities Inc. are planning to convert biogas generated at the Wastewater Treatment Plant to electricity through a co-generation unit.
- Peterborough City is developing a 10-year Housing & Homelessness Plan for the City & County.



210 Wolfe Street
Peterborough, ON L9J 2K9
PHONE: 705-743-0777
E-MAIL: bayotte@gpaedc.ca



List of SP Community Partners

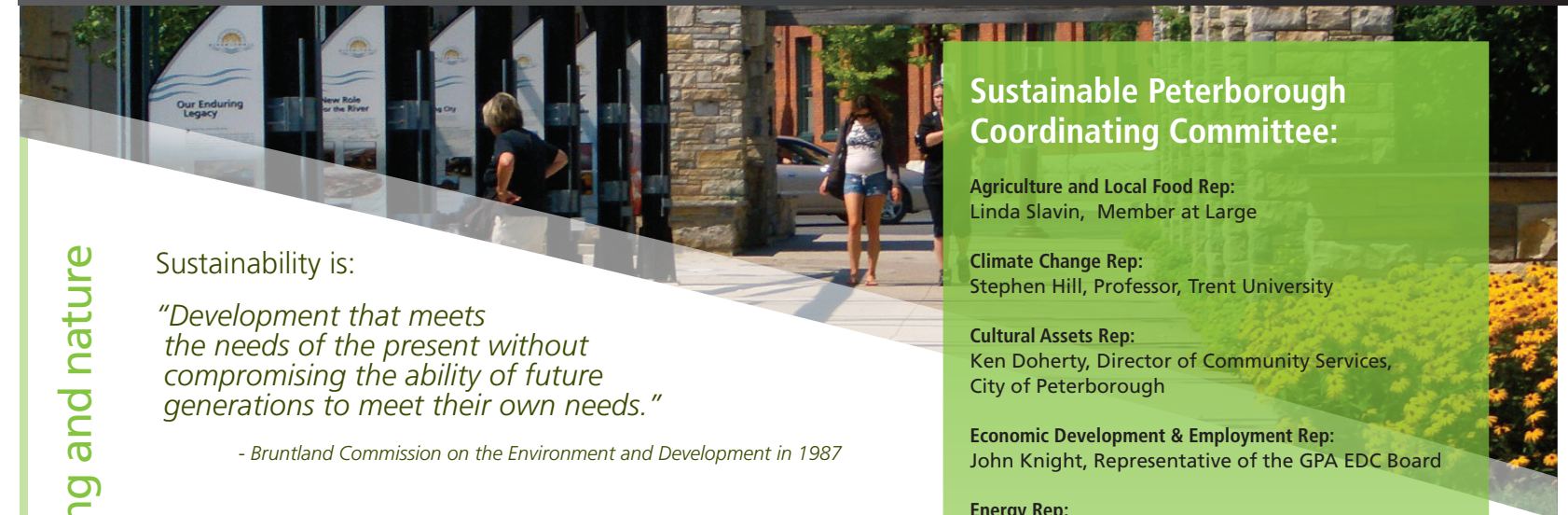
Sustainable Peterborough has close to 50 community partners committed to building synergies, implementing strategies and engaging other community members to help us realize our long-term vision for a sustainable future. For a complete list of our partners and some of the activities they are engaging in please visit our website: www.sustainablepeterborough.ca

sustainablepeterborough.ca

Our future...



Sustainable Peterborough 2012 Annual Report Card



Sustainable Peterborough Coordinating Committee:

Agriculture and Local Food Rep:
Linda Slavin, Member at Large

Climate Change Rep:
Stephen Hill, Professor, Trent University

Cultural Assets Rep:
Ken Doherty, Director of Community Services, City of Peterborough

Economic Development & Employment Rep:
John Knight, Representative of the GPA EDC Board

Energy Rep:
Sheridan Graham, Director of Facilities, Procurement & Communications, County of Peterborough

Healthy Communities Rep:
Peterborough County-City Health Unit Board Member

Land Use Planning Rep:
Jeannette Thompson, Planner, Selwyn Township

Natural Assets Rep:
Mike Hendren, Executive Director, Kawartha Heritage Conservancy

Transportation Rep:
Axel Tscherniak, Executive Director, GreenUP

Waste Rep:
Fred Irwin, Transition Town Peterborough

Water Rep:
Tom Cowie, Water Operations, Hiawatha First Nation

Other Rep:
Dave Clifford, Chief Administrative Officer, Douro-Dummer Township

Other Rep:
Lois O'Neill, Clerk, Galway-Cavendish & Harvey Township

Other Rep:
Trish O'Connor, Special Projects Leader, Fleming College

Other Rep:
Melanie Kawalec, Sustainability Manager, City of Peterborough

Sustainability Coordinator:
Brigid Ayotte, Business Cultivator, GPA EDC

Sustainability is:

"Development that meets the needs of the present without compromising the ability of future generations to meet their own needs."

- Bruntland Commission on the Environment and Development in 1987

Celebrating Our Accomplishments

The Greater Peterborough Area is committed to championing sustainability within our community! In the spring of 2012, the City of Peterborough, the County of Peterborough, the eight member Townships and two First Nations adopted the Greater Peterborough Area Community Sustainability Plan and committed us to leading the way towards our sustainable future.

Sustainable Peterborough will help guide us towards our 25-year vision of what we, as a community, would like the Greater Peterborough Area to look like in the future. It establishes a solid foundation on which to build a healthy environment, a strong and vibrant social and cultural network, and a prospering economy that can be celebrated by all, including future generations.

The Sustainable Peterborough 2012 Report Card is our first opportunity to celebrate our accomplishments, present our community partners, and introduce our future work plan. We invite the community to join with us in making the Greater Peterborough Area more sustainable and to share in our vision of caring communities balancing prosperity, well-being and nature.

Ken Doherty,
Chair of Sustainable Peterborough

Caring communities balancing prosperity, well being and nature

sustainablepeterborough.ca

Agriculture & Local Food

- Food and Farming Summit, sponsored by Peterborough Social Planning Council and Farms at Work, held October 11, 2012 increased awareness of the links between food, health, community economic development, food security and farming.
- The City of Peterborough now hosts up to 20 community gardens.
- Transition Town Peterborough together with 1,700 people celebrated the Purple Onion Festival's second annual local food festival.
- A regional study of Food Business Expansion and Retention Report has been released and is available on the Sustainable Peterborough web site.
- Trent University started up a new Sustainable Agriculture and Food Systems degree program.
- Hiawatha First Nations installed 6 raised community gardens.
- The Lakefield Farmer's Market celebrated local food for its third successful season in 2012.

Climate Change

- External funding was received for a Trent Master's student to complete a Climate Change Environmental Scan for the Greater Peterborough Area.

Cultural Assets

- The City of Peterborough adopted their Municipal Cultural Plan on April 23, 2013.

Economic Development & Employment

- Greater Peterborough Chamber of Commerce and GreenUP launched Green Business Peterborough on September 2012 to recognize businesses that have pledged to implement waste reduction, energy efficiency, and sustainable business practices.
- GreenUP hosted another successful Green Expo on Saturday, October 20, 2012 at Lansdowne Place Mall.
- The Feasibility Analysis and the Business Plan for the Kawartha Loon has been completed and are posted at www.transitiontownpeterborough.ca

Energy

- Sustainable Peterborough Energy Working Group hosted an Energy Planning Workshop on May 11, 2012 to review the new Green Energy Act reporting requirements and FIT 2.0 renewable energy opportunities.
- With the help of a series of incentive programs, municipalities are actively upgrading their lighting, electrical and HVAC equipment at their facilities.
- Lakefield Community Centre received AMO's "Best in Class Award" for energy efficiency.
- Peterborough Distribution Inc. (PDI) sponsored the Home Assistance Program for the City of Peterborough, Norwood and Lakefield. GreenUP completed over 182 home audits and installations with retrofits valued at \$40,519!
- GreenUP is delivering the Enbridge Gas Distribution Home Weatherization Program completing insulation and draft proofing retrofits on 21 area homes with an average cost of \$2,975 per household.
- PDI business customers saw 261.8 kW demand reduction and 1,037,000 kWh or \$103,700 savings through the Small Business Lighting Direct Install Program.
- Douro-Dummer Township installed a 10 kW ground-mount solar panel at the Douro Arena.
- Selwyn Township installed 10 kW rooftop solar installations on Lakefield & Bridgenorth Libraries as well as the Municipal Office.
- Township of North Kawartha replaced 50 street lights with LED energy efficient lights.
- City of Peterborough provided over \$750,000 in forgivable loans through the Renewable Energy Initiative to install solar panels on roofs of five rental buildings.
- Energy audits done on 131 homes in Urban Native Housing portfolio led to upgrades to higher efficiency furnaces and other building components.



Because we could not list all the exciting accomplishments of 2012, we have highlighted some of the more interesting actions across the County and City by our 11 Theme Areas. A detailed list of all accomplishments and their links can be found on the Sustainability Peterborough web site at www.sustainablepeterborough.ca.

Healthy Communities

- Social Housing Repair and Rehabilitation Program provided over \$10M in funding to complete repairs and accessibility up-grades to social housing buildings in the City & County.
- Peterborough Renovates Program offered over \$300,000 in forgivable loans to over 30 low-income homeowners in the City for home repairs.
- Fleming College has committed to "Leading in Sustainability" in their 2010 – 2015 Strategic Plan, working to infuse sustainability across the curriculum and through student experiences.
- Fleming College is pursuing an institutional sustainability rating through the Association for Advancement of Sustainability in Higher Education.
- Fleming offers programs and courses in sustainability namely Sustainable Agriculture, Sustainable Building Design and Construction, and Sustainable Building Renovations.

Land Use Planning

- There are currently 11 LEED registered building in Peterborough and area.
- The Endeavour Centre is constructing a 2-story home located at 136 ½ James Street in Peterborough which will be built to the "ultimate living building standards"!

Natural Assets

- Kawarthas, Naturally Connected has created a preferred natural heritage system with natural heritage features and ecological linkages for the Kawartha region.
- Hiawatha First Nation together with Ducks Unlimited upgraded the marsh and beaver dam naturalized area including planting wild rice in the wetlands.
- The Township of Selwyn completed a shoreline stabilization and naturalization project at Isabel Morris Park in Lakefield.
- Township of Selwyn and ORCA planted 1,500 trees as part of its 2012 gravel pit rehabilitation program.

Transportation

- City of Peterborough adopted their Transportation Master Plan in 2012. The County of Peterborough Transportation Master Plan is currently underway.
- City of Peterborough received a Bronze Level Bicycle Friendly Community Award for their installation of three new multiple unit bike racks and 2 bike repair stations.
- Peterborough Marina was awarded a Gold 5-Anchor status rating for their commitment to environmental improvement.
- The section of trail from Ackison Road to Highway 7 has officially become part of the Trans Canada Trail.
- Workplace Shifting Gears Program logged 35,416 car-free trips to work, avoiding nearly 50,000 kilograms of greenhouse gas emissions.

Waste

- Kawartha Turtle Trauma Centre earned \$11,700 from Stewardship Ontario from the 50,000 batteries collected in Ontario through the 2012 Waste Reduction Week battery drive.
- Township of Douro-Dummer began enforcing their one bag limit which results in 10% reduction of their waste.
- Galway, Cavendish and Harvey saw a 54% reduction in the volume of waste by eliminating the free tip pass for residents, implementing a bag limit, and revising their waste disposal fees effective September 1, 2012.
- Township of Selwyn established a construction and demolition program, diverting approximately 850 tonnes of material from the landfill.

Water

- Twice in 2012, Level 1 Low Water Conditions for the Otonabee Region watershed were declared. Water users were urged to reduce their water consumption by 10%.
- Township of Asphodel-Norwood installed water meters in all residential and commercial buildings, with consumption based water billing commencing in mid-2013. The City of Peterborough is also installing water meters with a start-up planned for 2013.
- City of Peterborough provided over 900 - \$50 rebates in 2012 through the WaterSense Low-flow Toilet Replacement Rebate Program.