



# PCCHU Overview May 9, 2014

# What is Public Health

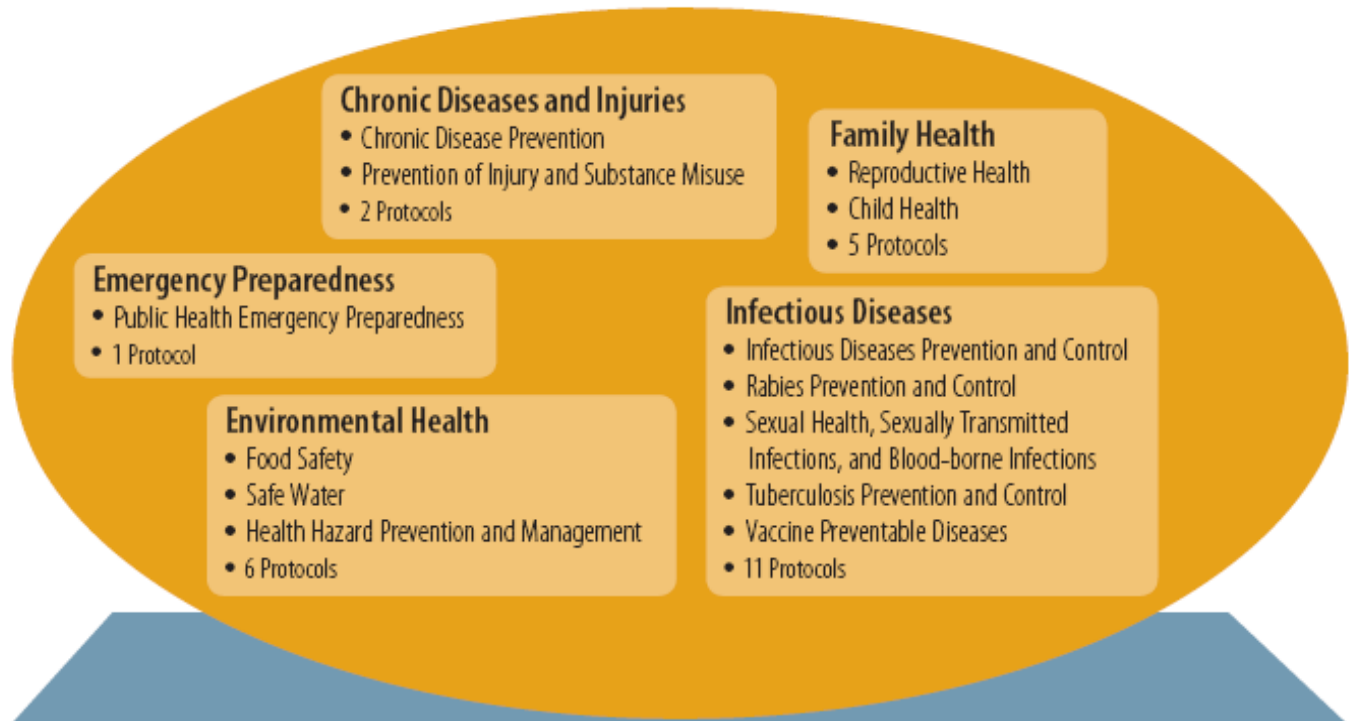
Video

# Key Facts

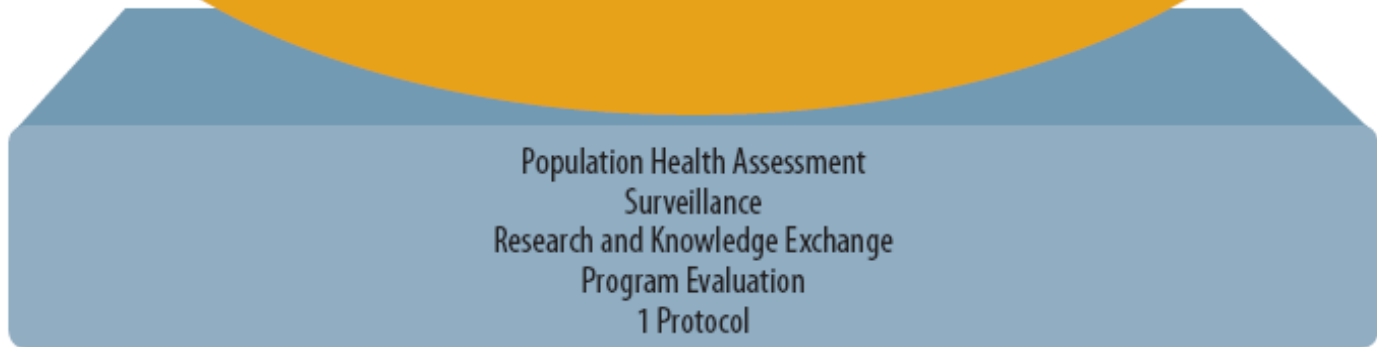
- Mandate is provincially determined; funding is provincial/municipal
- PCCHU region includes City, County, Curve Lake First Nation, Hiawatha First Nation
- One of the only health units with signed agreement to provide services to First Nations

# OPHS "Atlas"

## Program Standards and Protocols



## Foundational Standard and Protocol

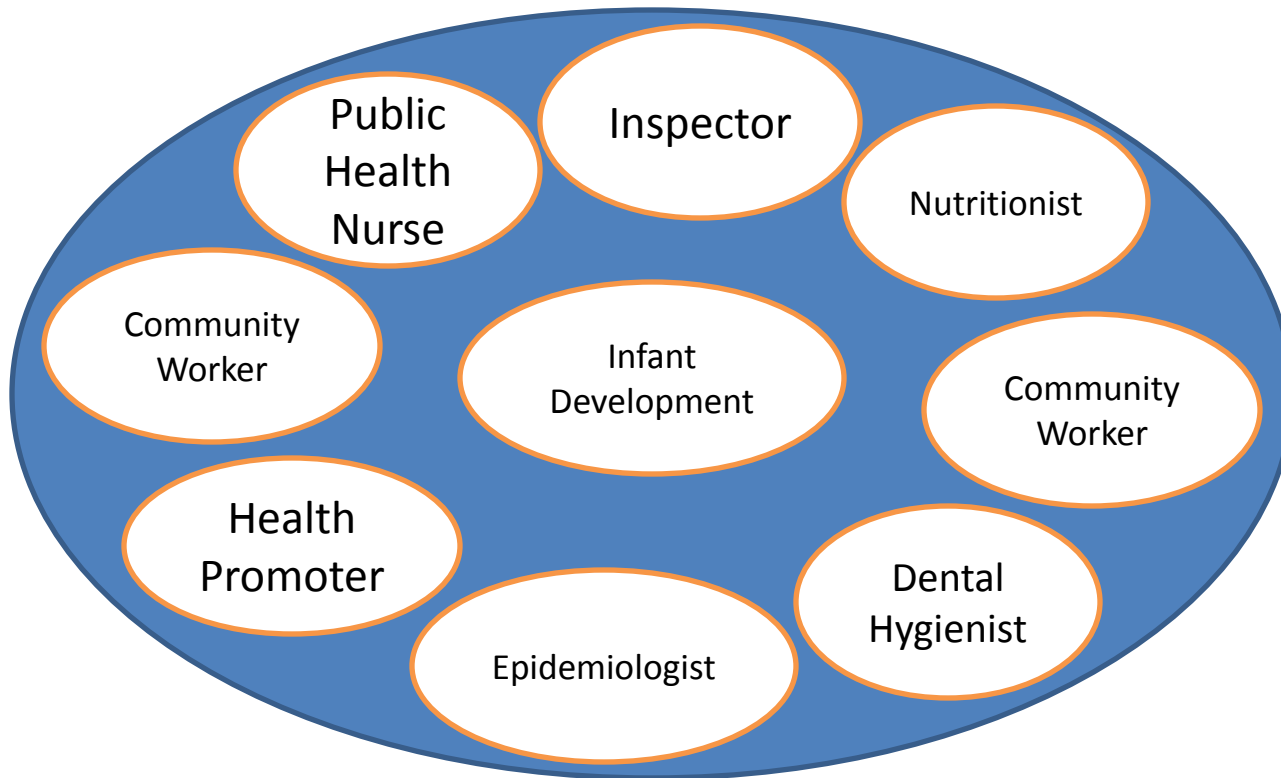


## Principles



# Key Facts

- Employ approximately 130 people



# Strategic Plan 2013-2017

- Community-Centred Focus
- Determinants of Health & Health Equity
- Quality and Performance
- Capacity and Infrastructure

# Alignment with Sustainability

- Determinants of Health Approach
  - Social and Physical Environments
- Tailoring Programs to Meet Local Needs & Priority Populations
- Surveillance of Trends, Research, Knowledge Exchange

# Alignment with Sustainability

- Chronic Disease and Injury Prevention
  - Active Transportation
  - Built Environment
  - Ultraviolet Light Exposure
  - Healthy Eating
  - Access to Recreation
  - Road Safety



# Alignment with Sustainability

- Health Protection
  - Preconception Health & Healthy Pregnancies
  - Healthy Growth and Development
  - Food Safety
  - Safe Water
  - Health Hazards (includes Air Quality, Extreme Weather, Climate Change, Exposure to Radiation)

# Impact

## Video

# Questions

