

Kawarthas, Naturally Connected

REVIEW & UPDATE

February 14, 2014



KAWARTHA LAND TRUST

The Project Vision and Goals

Vision: A landscape that supports the needs of people and nature in a way that preserves and enhances the unique character of the Kawarthas.

Goal: Identify and map a connected system of natural areas that can help:

- guide sustainable land use and resource management
- identify stewardship and restoration sites
- set priorities for conservation land purchases
- identify additional research needs



KAWARTHA LAND TRUST



Many organizations and agencies are involved in land management but are their activities integrated?

- Municipalities
- CA Boundaries
- MNR Districts
- EcoRegions

The Partners Involved

- Agricultural Development Advisory Committee: City of Kawartha Lakes
- Alderville First Nation
- City of Kawartha Lakes
- City of Peterborough
- County of Peterborough
- Ducks Unlimited Canada
- Environment Council for Clear/Stoney/White Lakes
- Federation of Ontario Cottagers' Associations
- Havelock-Belmont-Methuen Lake Association
- Jack's Lake Cottagers Association
- Kawartha Conservation
- Kawartha Ecological Growers
- Kawartha Land trust
- Kawartha Lake Stewards Association
- Ontario Federation of Anglers and Hunters
- Ontario Ministry of Natural Resources
- Ontario Ministry of Tourism, Culture and Sport
- Ontario Stone, Sand & Gravel Association
- Ontario Woodlot Association
- Otonabee Region Conservation Authority
- Parks Canada, Trent-Severn Waterway
- Peterborough County-City Health Unit
- Peterborough Historical Society
- Trans-Canada Trail
- Trent University



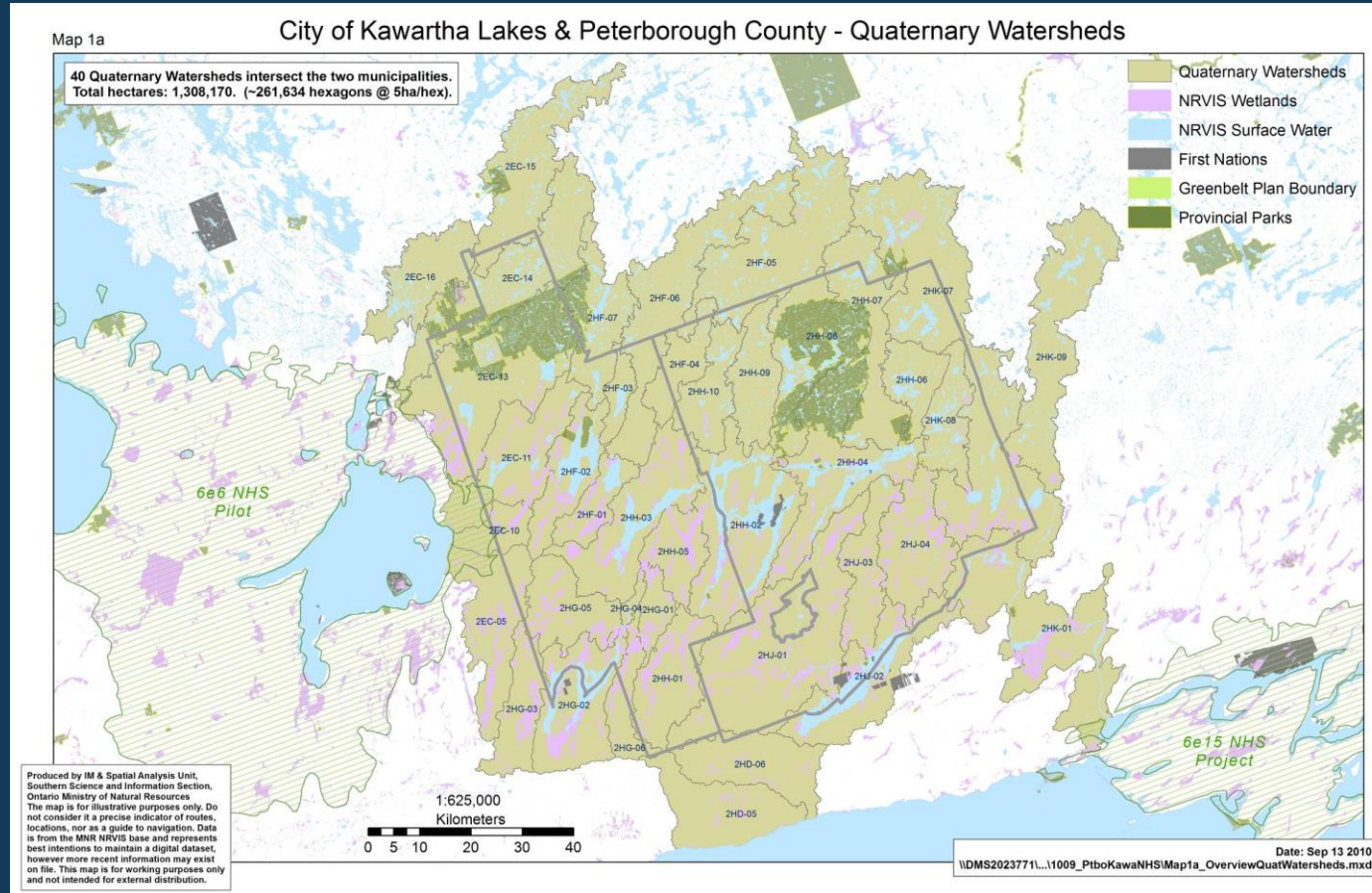
KAWARTHA LAND TRUST

The Project Area: an ecological boundary

- Steering committee will decide on an appropriate study area
- Should be ecologically based
- Integrate with other, similar processes (ICSP's)



KAWARTHA LAND TRUST



Design Process

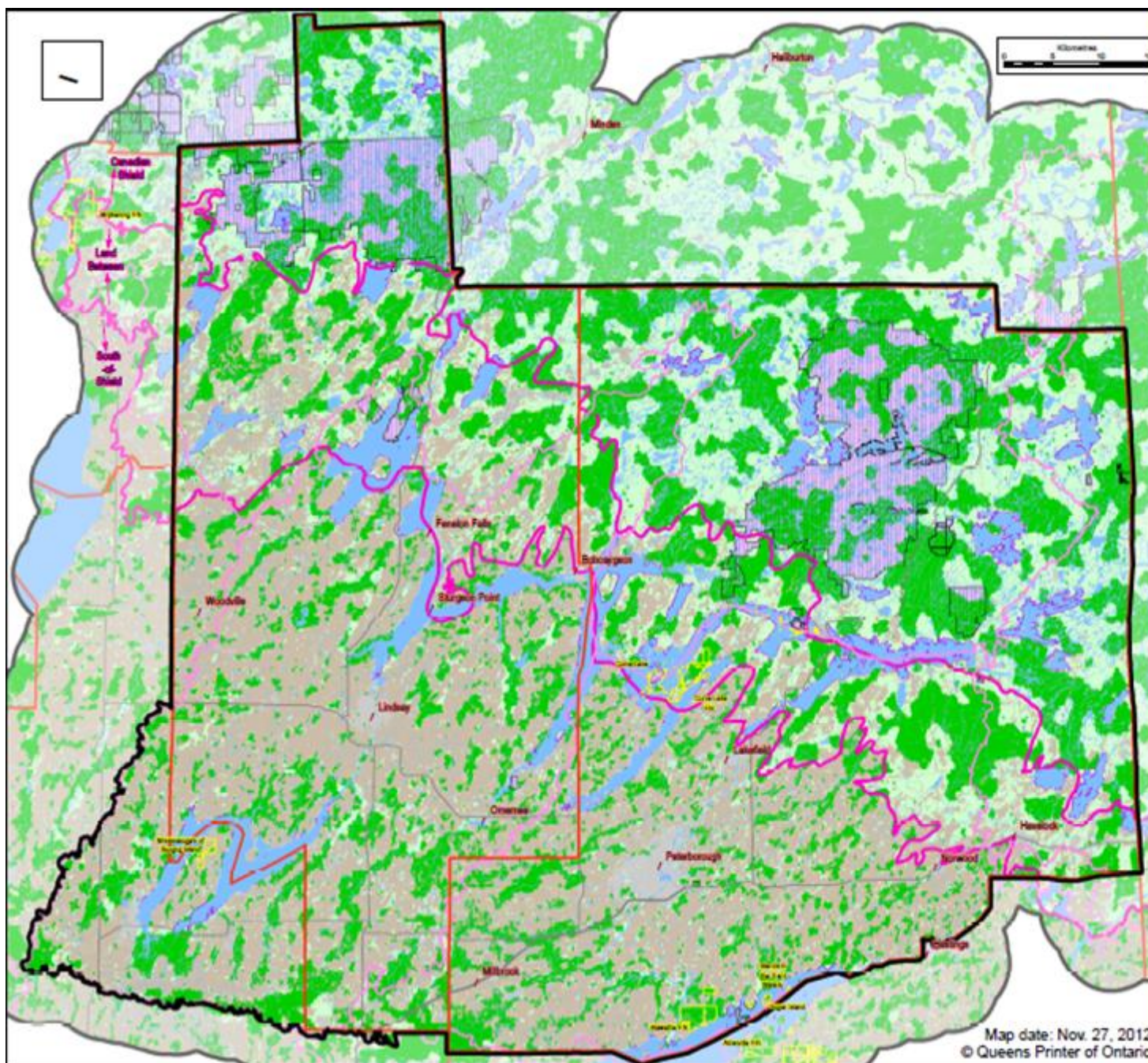
- Identify all available natural heritage data
- Identify any remaining gaps in data
- Consider all existing policies and existing land uses
- Consider what best available science tells us
- Use a computer generated (GIS) program to identify model(s) for what a connected natural system would/could look like for the entire region
- **Key consideration is the connections and linkages upon the natural landscape*
- **Key component is consensus and trust within a strong working group*



The Products of the NHS Project

- **A database of information and computer/GIS layers for mapping to assist stakeholders with planning and projects**
- **A map outlining the selected Natural Heritage System**
- **The NHS products can be used to:**
 - **Compare the relative values of different areas**
 - **Set priorities for stewardship projects & land conservation**
 - **Understand the impact of our land use decisions and help identify gaps in information**
 - **Inform the municipal planning process**
 - **Communicate the value of all noted above through different mediums**





KAWARTHAS, NATURALLY CONNECTED
Working together to sustain our landscape

Preferred Solution

- The Land Between & Canadian Shield targets set at 50%
- South-of-Shield targets set at 70%

Areas Added: Provincial Parks and Conservation Reserves
Areas Added: 100m Riparian Natural Cover on Lakes >200 ha.

Selected in Solution

Natural Lands

Areas Added to Solution

Provincial Park and Conservation Reserve

100m Riparian on Lakes >200 ha

Not Selected in Solution

Natural Lands

Areas Excluded from Solution

Developed Land (i.e. urban area, roads, etc.)

Agriculture Land (predominantly)

Boundaries

First Nation Community

Upper-Tier Municipalities

Conservation Authority Jurisdiction

Landscape Zones
i.e. Canadian Shield, The Land Between, South-of-Shield

Provincial Park or Conservation Reserve

Produced by: Ontario Ministry of Natural Resources

This map is for illustrative purposes only.

Do not consider it a precise indicator of routes, locations, nor as a guide to navigation.

This map is for working purposes only and not intended for external distribution.

This map may also contain errors or omissions.

Map date: Nov. 27, 2012
© Queens Printer of Ontario

How the NHS will be used by partners

Environment Council:

Information and guidance for discussions with County and municipalities with respect to land use planning;

Direction for research and stewardship projects for lake plans;

Assistance with identification of areas requiring policy protection.



KAWARTHA LAND TRUST

How the NHS will be used by partners

- **County Planners (and Municipal)**
- County Planners need information and a tool to map significant woodland and valleylands per the PPS where:
 - where development can proceed without natural heritage implications;
 - that will link existing natural heritage features;
 - that could be secured by the Conservation Authority or others;
 - that we definitely don't want to touch.
- ***Need a tool with information to:***
 - assist with pre-consultation in the development for planning.
 - support the update to the plan - mapping of connectivity corridors explain the values system and why certain areas pop up to support that value – a very powerful tool.
 - explains the values system and why certain areas pop up to support that value – a very powerful tool.



How the NHS will be used by partners

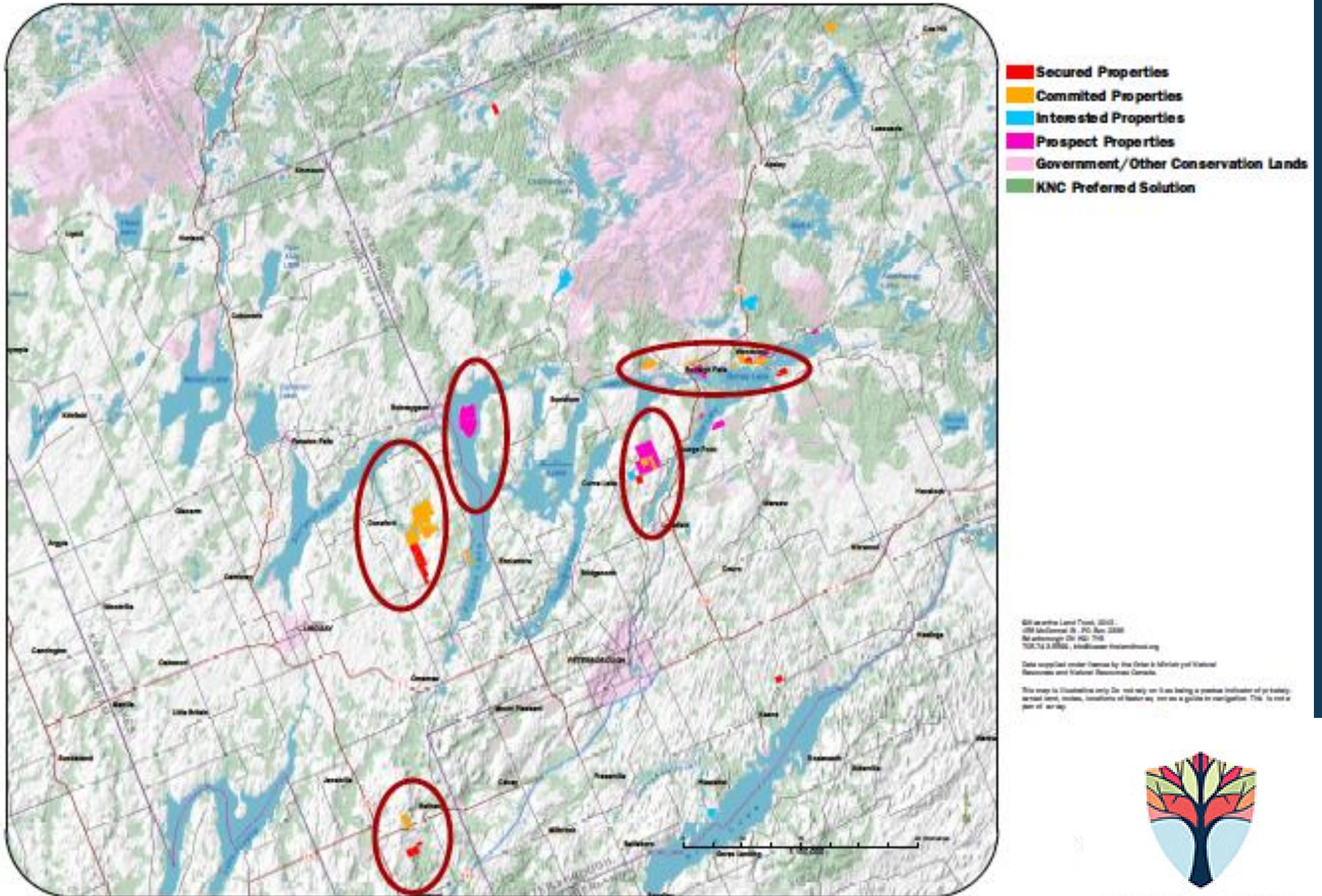
Kawartha Land Trust

- Identify priority lands for securement
- Focus outreach and relationship building
- Work and share information with partners
- Illustrate/Communicate the goals of KLT to funders

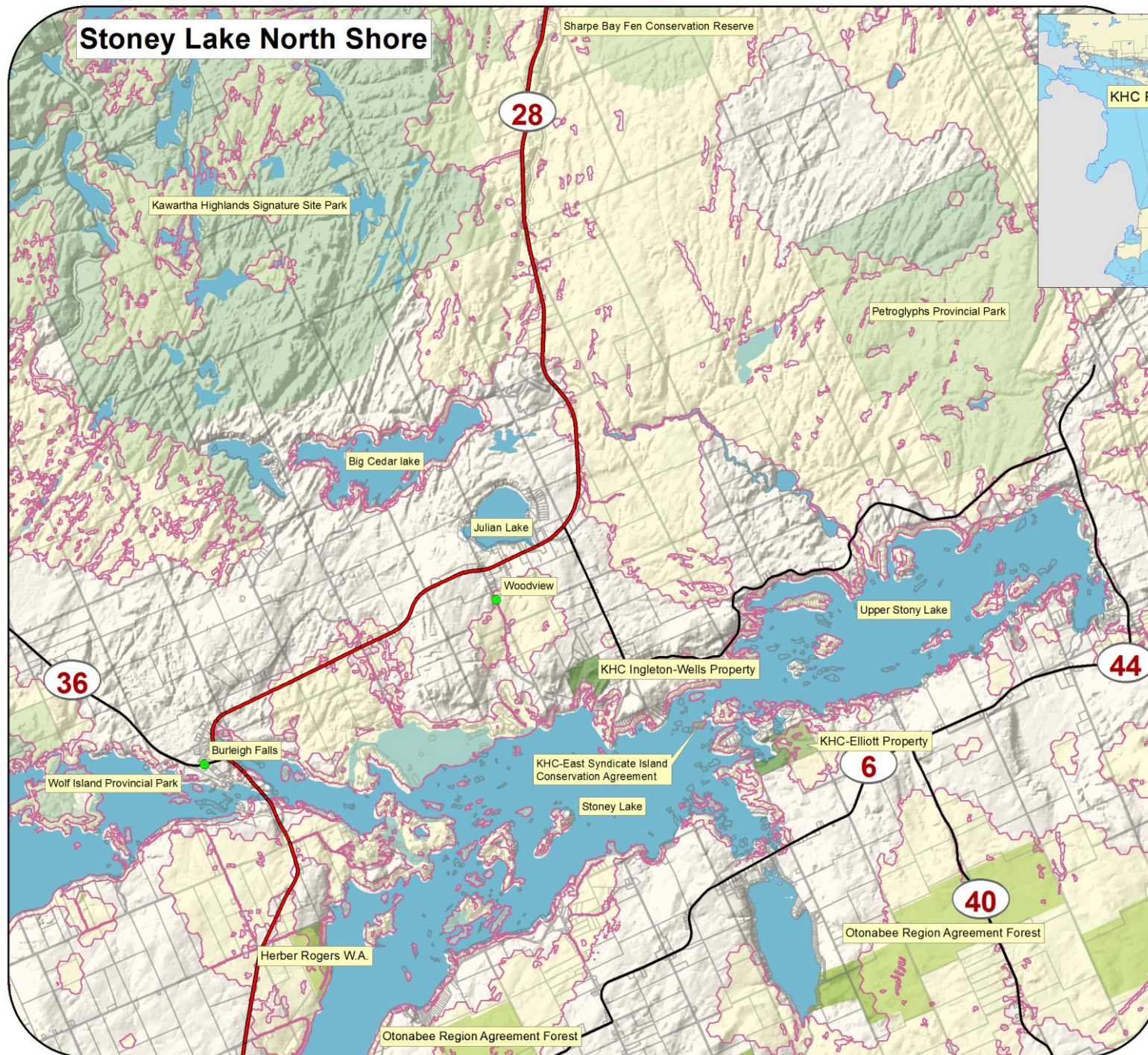


KAWARTHA LAND TRUST

KLT's 5 Focal Areas – Connecting The Dots



Stoney Lake North Shore



- Populated Centre
- Highway
- Arterial Road
- KHC Conservation Property
- KNC Preferred Solution
- Parks and Reserves
- Conservation Areas
- Other Land Parcels
- Lakes

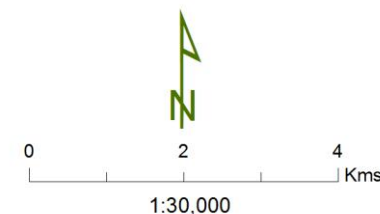
Acronyms:
 KHC = Kawartha Heritage Conservancy
 KNC = Kawartha Naturally Connected

This map is illustrative only. Do not rely on it as being a precise indicator of privately-owned land, routes, locations of features, nor as a guide to navigation. This is not a plan of survey.
 Projection: Lambert Conformal Conic.
 Datum: World Geodetic System 1984.

© Kawartha Heritage Conservancy, 2013.

Kawartha Heritage Conservancy
 156 McDonnell Street
 Peterborough, Ontario K9H 2V6

Data supplied under license by the Ontario Ministry of Natural Resources and Natural Resources Canada. © Queen's Printer for Ontario and its licensors, 2012. May not be reproduced without permission.



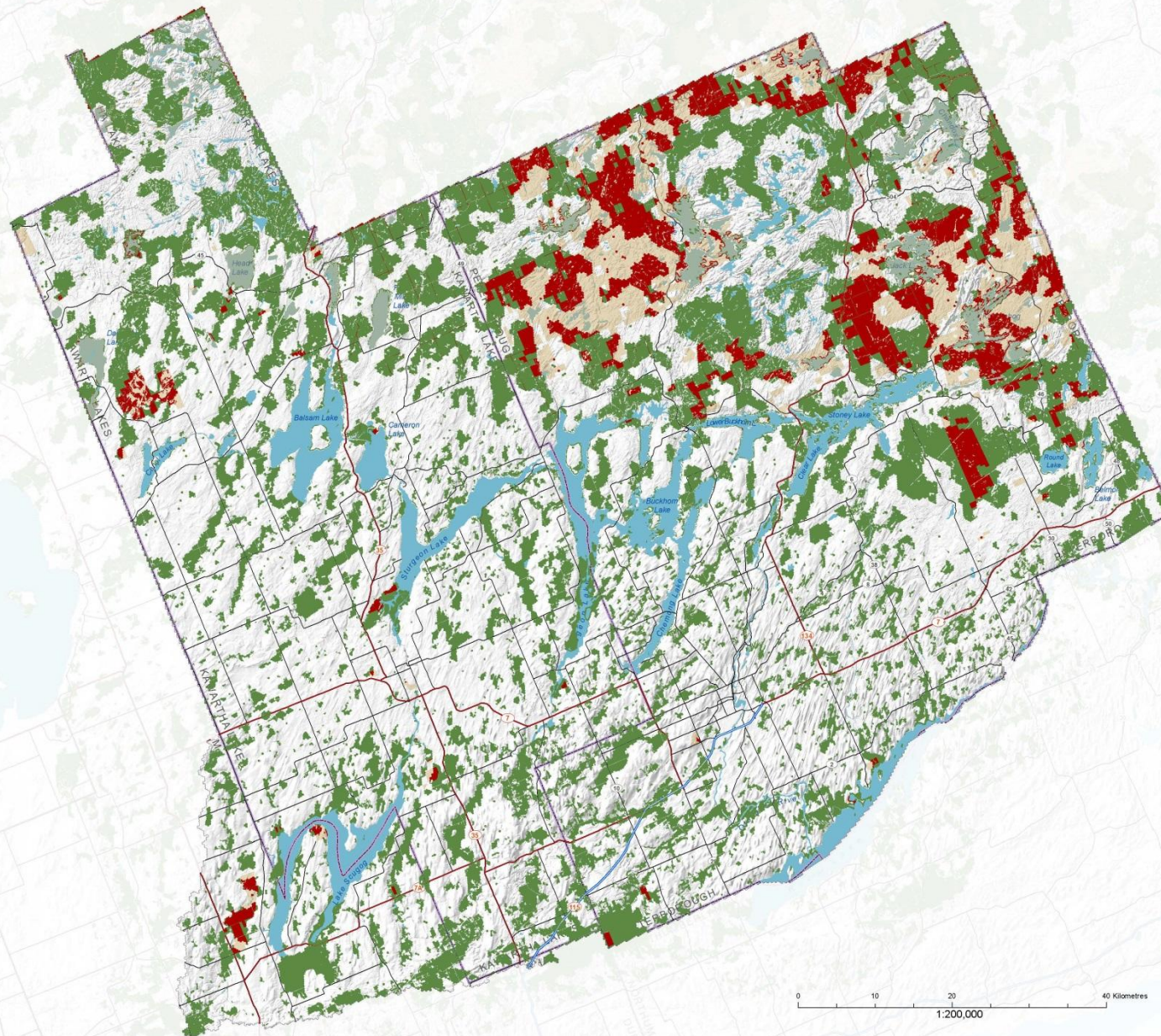
*"Protecting Your Natural Environment
 and Cultural Heritage in the Kawarthas"*

Where are we now?



KAWARTHA LAND TRUST

KNC Preferred Solution & Public Lands



KNC/Public Lands Overlap

Public Land

KNC Preferred Solution

KNC/Public Lands Overlap: The area where the KNC Preferred Solution and Public Lands overlap.

Public Area: This area is a combination of Crown Land, Municipal Land, and Fleming Land.

© Kawartha Land Trust, 2013.
156 McDonnell St. R.O. Box 2338
Peterborough ON K9J 7Y8
705.743.5599, info@kawarthalandtrust.org

Data supplied under license by the Ontario Ministry of Natural Resources and Natural Resources Canada.

This map is illustrative only. Do not rely on it as being a precise indicator of privately-owned land, routes, locations of features, nor as a guide to navigation. This is not a plan of survey.



KAWARTHA LAND TRUST

Protecting the land you love.

Next Steps - Continued

Analyses of Protection Areas and Subsequent Goals

DEFINITIONS:

Protected Areas – Provincial Parks, Conservation Areas, and Conservation Reserves

Regulated Areas – Areas of Natural and Scientific Interest, Provincial Significant Wetlands, Municipality Environmental Protection Areas, Kawartha Region Conservation Authority Regulated Areas, and Otonabee Region Conservation Authority Regulated Area

Protection Areas – The protected areas and Regulated Areas combined.

Public Areas – Crown land, Municipal Land, Fleming Lands, Provincial Parks, Conservation Areas, and Conservation Reserves



KAWARTHA LAND TRUST

Next Steps – Initial Stats

Total Protected Area (%) **9.50**

Portion of KNC PS Protected (%) **14.29**

Portion of KNC PS on Public Areas (%) **29.11**

Portion of KNC PS Protected or Regulated on Public Areas (%) **18.52**

Portion of KNC PS Not Protected Nor Regulated but on Public Areas (%) **10.57**

Portion of KNC PS Not Protected Nor Regulated but on Private Lands (%) **36.07**

Portion of KNC PS Protected or Regulated on Private Lands (%) **34.41**



KAWARTHA LAND TRUST

Next Steps & Implementation

1. *KNC “Priority Action” in Sustainable Peterborough and City of Kawartha Lakes ICSP*
2. *Part of the CKL and Peterborough County OPR*
3. *Basis for Regional Land Securement Strategy*
4. *Basis for Stewardship Program*
5. *Working Groups:*
 1. *Municipal Planning & Policy,*
 2. *Land Securement,*
 3. *Environment Stewardship,*
 4. *Communications,*
 5. *Research and Further Refinements*

