

**sustainable**

Peterborough



# **2013 Annual Report Card**

**What a Difference a Year Makes!**





In the spring of 2012 the City of Peterborough, the County of Peterborough, the eight member Townships and two First Nations adopted the Greater Peterborough Area Community Sustainability Plan and committed us to leading the way towards our sustainable future.

Based on community feedback during the first round of engagement, 11 key *Theme* areas of focus and 18 *Priority Actions* emerged for Sustainable Peterborough. These are areas that our community values the most and form the structure of our Sustainable Peterborough Plan.

# 2013 Annual Report Card



**Our future... Our legacy sustainable Peterborough**

**Sustainable Peterborough 2013 Annual Report Card**



**Sustainability is:**

*"Development that meets the needs of the present without compromising the ability of future generations to meet their own needs."*

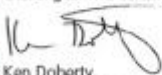
*- Bruntland Commission on the Environment and Development in 1987*

**What a difference a year makes!**

Last year we had to beat the bushes to get 2 pages of action items for our first report card. I still remember the responses to our presentations to our partner municipalities. They were justifiably proud of their accomplishments. In the spirit of healthy competition, they vowed to do even better in 2013. And just look at what our community accomplished last year! There are 94 action items covering 6 pages! But, this is just a sampling of the over 300 items recorded on our website, which shows the depth and breadth of sustainability initiatives across the region.

This year will be even more productive. We are preparing grant applications for the development of a regional Greenhouse Gas Reduction Plan. As a Partner in Climate Protection, we intend to reduce local greenhouse gas emissions and increase our adaptations to climate change conditions.

Sustainable Peterborough has come a long way. We've forged a strong regional partnership of municipalities, First Nations, organizations, businesses, and community groups. We've adopted an Integrated Community Sustainability Plan. And, now we are tackling one of the biggest environmental challenges. This certainly bodes well for our 2014 report card.

  
Ken Doherty,  
Chair of Sustainable Peterborough

**Sustainable Peterborough Coordinating Committee:**

<b>Agriculture and Local Food Rep:</b> Linda Slavin, Community Member	<b>Transportation Rep:</b> Peter Hughes, GreenUP
<b>Climate Change Rep:</b> Stephen Hill, Trent University	<b>Water Rep:</b> Tom Cowie, Hiawatha First Nation
<b>Cultural Assets Rep:</b> Ken Doherty, City of Peterborough	<b>Other Rep:</b> Fred Irwin/ Cheryl Lyon, Transition Town Peterborough
<b>Economic Development &amp; Employment Rep:</b> John Knight, Peterborough Economic Development Corporation Board	<b>Other Rep:</b> Lois O'Neill, Municipality of Thorn Lakes
<b>Energy Rep:</b> Sheridan Graham, County of Peterborough	<b>Other Rep:</b> David Clifford, Township of Douro-Dummer
<b>Healthy Communities Rep:</b> Larry Stinson, Peterborough County-City Health Unit	<b>Other Rep:</b> Trish O'Connor, Fleming College
<b>Land Use Planning Rep:</b> Jeannette Thompson, Township of Selwyn	<b>Sustainability Coordinator:</b> Brigid Ayotter/ Anica Pascalau
<b>Natural Assets Rep:</b> Vacant	<b>Partnership Developer:</b> Katie Allen

**sustainablepeterborough.ca**

Caring communities balancing prosperity, well being and nature

# Agriculture & Local Food



## Priority Actions

- Undertake a Community Food System assessment to identify gaps and opportunities
- Identify and protect farmland & increase capacity to supply local food

## Key Accomplishments

- “Future of Food: Next Steps” summit
- 32 Community gardens across the City and the County
- Student Nutrition Programs in 47 local schools
- Millbrook Community Garden donation to Millbrook Food Share
- Courses and workshops
- Food skills and literacy

# Climate Change



## Priority Action

Become active members in the Partners for Climate Protection Program to establish baseline greenhouse gas emissions and set a reduction target.

## Key Accomplishments

- Climate Change Symposium
- Climate change rally
- Climate Change Scoping Document
- City and County passed resolutions to join Partners for Climate Protection and develop a Climate Change Action Plan for the Greater Peterborough Area



# Cultural Assets



## Priority Action

All GPA municipalities should consider developing a Municipal Cultural Plan.

## Key Accomplishments

- The Township of Selwyn completed cultural mapping project
- “Art in Motion” public art project
- Millbrook Downtown Revitalization Strategy
- City of Peterborough released Cultural Maps
- Inaugural County Day at Lang Pioneer Village

# Economic Development & Employment



## Priority Action

Promote the region's sustainability initiatives and economic potential.

## Key Accomplishments

- 25 new businesses in the Green Business Peterborough program
- 2013 PGA Tour of Canada held at Wildfire Golf Club
- Transition Town Peterborough introduced the Kawartha Loon Local Currency
- Peterborough Aerospace Centre
- Sustainable Business Initiative launch



## Priority Actions

- Community energy planning
- Energy efficiency standards

## Key Accomplishments

- Lighting retrofit projects
- Circle Organic built a straw bale farmhouse, an Integrated Farm Building, root cellar and greenhouse
- Hiawatha First Nation built a Bronze LEED certified Fire & EMS building
- GreenUP delivered the Home Assistance Program and the Home Weatherization Low Income Program
- Peterborough Sports and Wellness Centre LEED certification.

# Healthy Communities



## Priority Action

Increase the availability of affordable housing.

## Key Accomplishments

- Housing and Homelessness Plan approved by City and County Council
- Community Foundation of Greater Peterborough launches Vital Signs Report
- Fleming College Office of Sustainability established in August 2013
- 2 new splash pads and 3 new sports fields in the City of Peterborough

# Land Use Planning



## Priority Action

Establish multi-use neighbourhood design guidelines.

## Key Accomplishments

- The Township of Otonabee-South Monaghan preserves agricultural lands through its Official Plan policies.
- The Township of Selwyn's improvement plan features a complete streets model.



# Natural Assets



## Priority Actions

- Integrate 'Kawarthas... Naturally Connected' Natural Heritage System into local Official Plans
- Identify and access incentives for land stewardship

## Key Accomplishments

- Bee hives at Camp Kawartha and Elmhirst Resort
- 178 acres of natural, ecologically studied land donated to Kawartha Land Trust
- Peterborough City and County ash tree inventories completed
- 30 trees and shrubs planted by PCCHU employees in collaboration with the City and ORCA

# Transportation



## Priority Actions

- Complete the proposed short-term cycling network
- Assess solutions to rural mobility challenges

## Key Accomplishments

- New cycling trails connect Lang Pioneer Village with the Trans Canada Trail
- Trent hosts Student CarShare, open to students and the community
- B!KE launched a community Bike Share program
- Workplace Shifting Gears Program engaged over 1,500 employees and avoided 23 tonnes greenhouse gas emissions



# Waste



## Priority Actions

- Identify and promote reuse opportunities
- Establish a curbside organic waste collection program

## Key Accomplishments

- County of Peterborough collected 86.1 tonnes of leaf and yard waste in pilot program
- Hiawatha First Nation rolled out a new curbside collection service
- reBOOT sold 635 rebuilt computers, repaired over 305 computers and recycled over 16,000 of e-waste
- City of Peterborough achieved 55% diversion rate, their highest ever.
- Township of Cavan Monaghan implemented an e-waste program and introduced styrofoam recycling

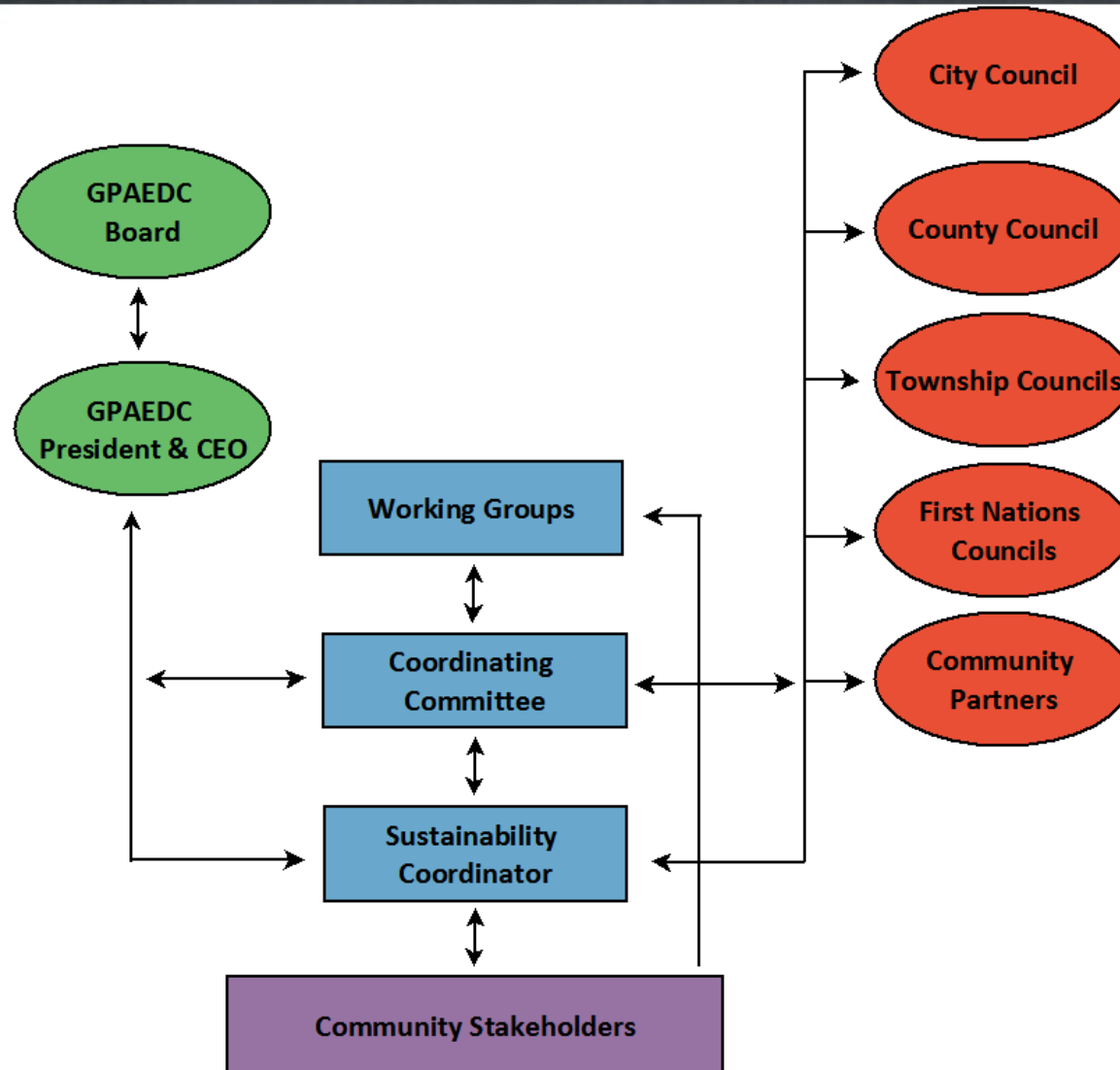


## Priority Actions

- Establish conservation and efficiency programs
- Identify funding to enable identification of shoreline/wetland areas in need of restoration
- Integrated watershed management plan for the GPA

## Key Accomplishments

- Hiawatha First Nation initiated source water protection policy and identified 200+ source water systems
- The City of Peterborough handed out 867 low flow toilet rebates amounting to 75,060 liters of water savings
- ORCA and Camp Kawartha delivered the “Be a Water Steward” program



# 2013 Coordinating Committee



<i>Agriculture &amp; Local Food Rep:</i>	Linda Slavin, Committee Vice Chair, Community Member
<i>Climate Change Rep:</i>	Stephen Hill, Professor, Trent University
<i>Cultural Assets Rep:</i>	Ken Doherty, Committee Chair, City of Peterborough
<i>Economic Development Rep:</i>	John Knight, Peterborough Economic Development Board
<i>Energy Rep:</i>	Sheridan Graham, Director, County of Peterborough
<i>Healthy Communities Rep:</i>	Larry Stinson, Peterborough County-City Health Unit
<i>Land Use Planning Rep:</i>	Jeannette Thompson, Selwyn Township
<i>Transportation Rep:</i>	Peter Hughes, GreenUP
<i>Waste Rep:</i>	Fred Irwin/Cheryl Lyon, Transition Town Peterborough
<i>Water Rep:</i>	Tom Cowie, Hiawatha First Nation
<i>Other Rep:</i>	Lois O'Neill, Municipality of Trent Lakes
<i>Other Rep:</i>	David Clifford, Douro-Dummer Township
<i>Other Rep:</i>	Trish O'Connor, Fleming College
<i>Other Rep:</i>	Melanie Kawalec, City of Peterborough
<i>Sustainability Coordinator:</i>	Brigid Ayotte/Anca Pascalau
<i>Partnership Developer</i>	Katie Allen

## **New Coordinating Committee Members in 2014**

<i>Natural Assets Rep :</i>	Meredith Carter, Otonabee Regional Conservation Authority (ORCA)
<i>Other Rep:</i>	Dawn Berry-Merriam, Peterborough Social Planning Council (PSPC)
<i>Other Rep:</i>	Jennifer Olauson, Fleming College, replacing Trish O'Connor

# Active Community Working Groups



- **Future of Food and Farming Working Group**  
Co-Chairs Dawn Berry Merriam, PSPC, and Pat Learmonth, Farms at Work
- **Climate Change Working Group**  
Chairperson Dr. Stephen Hill, Trent University
- **Energy Working Group**  
Chairperson Sheridan Graham, County of Peterborough
- **Kawarthas Naturally Connected**  
Chairperson Mike Hendren, Kawartha Land Trust
- **Economic Development Working Group**  
Chairperson Rob Arkell, Cambium Environmental
- **Municipal Cultural Plan Working Group**  
Chairperson Sheridan Graham, County of Peterborough
- **Healthy Kids Community Challenge**  
Co-Chairs Larry Stinson, PCCHU, and Linda Mitchelson, City of Peterborough

# Community Partnership



- 38 Champions
- 5 Leaders
- 12 Members



And growing...

## **New partners in 2013:**

- Black Honey
- Circle Organic
- B!KE
- The Food Forest
- Kawartha World Issues Centre (KWIC)



# 2014 Opportunities



- Solar projects
- Water meters throughout the City of Peterborough
- Seneca College opening School of Aviation & Flight Technology at the Peterborough Airport
- Asphodel-Norwood's new Transfer Station
- Greater Peterborough Area Climate Change Action Plan
- GreenUP working on a Repair Café and a Tool Library
- Mattress recycling program to start up
- Healthy Kids Community Challenge
- Pollination Partners Program
- Trent Lakes to open Re-Use Centres at transfer stations
- Sustainable Forestry Certification for County Forests
- Age Friendly Plan
- The Avenues Heritage Conservation District Study
- Heritage Tree Policy
- Project to increase use of local food in schools



# Questions?



[www.sustainablepeterborough.ca](http://www.sustainablepeterborough.ca)

